



Photo: Knut Opeide

Removal of old tag bracket:

The old bracket is usually very firmly attached. It requires patience and some time for the removal. It is easiest to leave the old bracket attached to the windscreen. Never use a screwdriver or other metal objects to detach the bracket, as these can damage the windscreen.

Try the following:

The bracket must be softened/moistened where it is attached to the screen to facilitate loosening. Normal washing-up liquid or an adhesive solvent may be used. Adhesive solvent is available in a spray can. Apply the solvent/soap to the windscreen above the bracket, so that it runs down into the adhesive pad behind the bracket. Repeat this several times. Cover the dashboard with a rag or towel to protect it from splatter. Let the agent work for 5-10 minutes before attempting to pull the bracket loose with your fingers, a plastic spatula or another plastic object that cannot damage the windscreen. If it does not loosen, repeat with more solvent agent/soap and wait for a while. Gradually one edge of the bracket will loosen and it can finally be pulled off.



New type of AutoPASS tag

Information and instructions for installation

These are the new AutoPASS tags which will gradually replace the old tags. They are produced by two different manufacturers, and function in the exact same way as the old ones, but are attached differently. The new tags are affixed to the windscreen with Velcro.



English

www.autopass.no



1-800-999-9999



Photo: Knut Opeide

AutoPASS New type of tag

If it is registered through a valid agreement, the AutoPASS tag may be used for AutoPASS toll stations in Norway and in some other toll stations in Scandinavia.

You can start using your new AutoPASS tag immediately.

For how to return your tag and other information, see: www.autopass.no



Correctly attaching your AutoPASS tag

Passenger car

The tag should be placed inside at the top of the windscreen. If the windscreen has a shaded/dotted area by the rear-view mirror, the tag should be placed there. There must be a 3-7 cm free space around the tag, which should not obstruct the drivers view.



Lorry and bus

The tag should be placed inside at the bottom of the windscreen. There must be a 3-7 cm space around the tag. Note! This also applies in relation to windscreen wipers in resting position

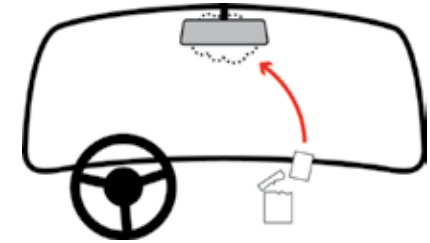


If you are in doubt about where to place the tag, you may find information in your vehicle driver's manual or from a dealer of your brand of vehicle.

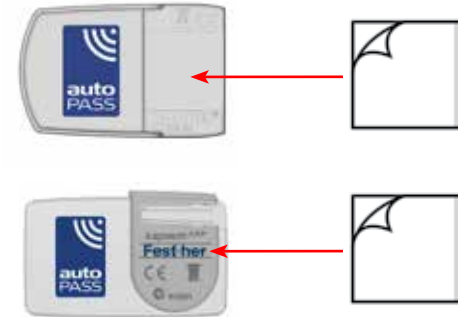
The temperature of the windscreen should be at least 15 degrees centigrade when you attach the tag, in order for the adhesive to adhere properly. Switch on the car heater if the weather is cold or the windscreen is moist.

Instructions for installation

1. Remove the old tag from the vehicle if existing. If you also want to remove the old tag bracket, see final page on how to proceed.
2. Using the wet wipe provided, clean the area where the new tag is to be affixed. Do not use soap. Ensure that the windscreen is completely dry before you proceed.



3. Peel the backing paper from one side of the Velcro and attach the Velcro to the area marked on the tag.



4. Peel off the backing paper from the other side of the Velcro and press the tag against the windscreen. Continue pressing for 10 seconds.

